

MBS & TREASURY MARKETS

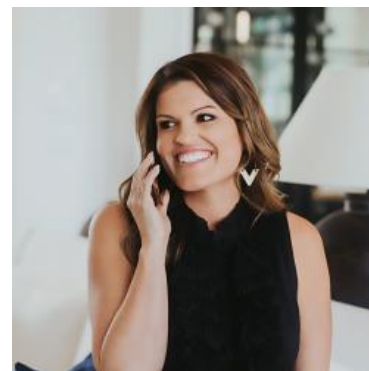
Daily Coverage. Industry Leading Perspective.

ALERT: Weakest Levels of The Day

MBS are down nearly an eighth of a point and at new lows for the day--just barely. Some lenders are just now seeing an eighth of a point of weakness versus morning rate sheet print times. As such, this is the threshold of negative repricing risk for the jumpier lenders.

10yr yields are up 4bps at 4.317--also the highs of the day.

Selling has been slow and steady.



Ashlynn Kelso

Senior Loan Officer, RWM
Home Loans

www.ashlynnkelsoteam.com

M: (737) 444-1002

ashlynnkelso@gmail.com

700 S Austin Ave Suite 202
Georgetown Texas 78626
1074888

