

# MBS & TREASURY MARKETS

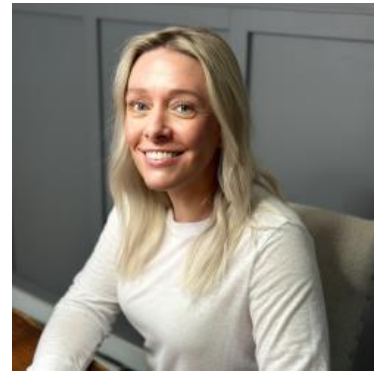
Daily Coverage. Industry Leading Perspective.

## **ALERT:** Weakest Levels of The Day

MBS are down nearly an eighth of a point and at new lows for the day--just barely. Some lenders are just now seeing an eighth of a point of weakness versus morning rate sheet print times. As such, this is the threshold of negative repricing risk for the jumpier lenders.

10yr yields are up 4bps at 4.317--also the highs of the day.

Selling has been slow and steady.



**Shannon McAlister**

Luminate Home Loans

<https://home-owners-pdx.com/>

**M:** (503) 516-8881

[shannon.mcalister@goluminate.com](mailto:shannon.mcalister@goluminate.com)

NMLS885982

Member  
**FDIC**

