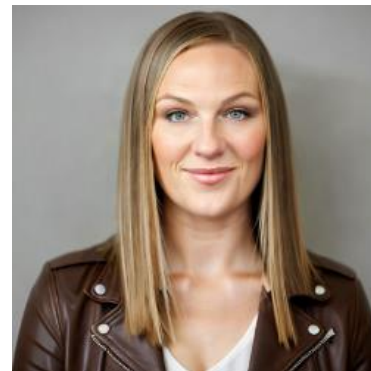


MBS & TREASURY MARKETS

Daily Coverage. Industry Leading Perspective.

ALERT: Negative Reprice Risk Increasing

MBS are at new lows for the day, down roughly 0.05 from the previous low. This is enough of a drop that we could see the first few jumpy lenders pull the trigger on a reprice. Risks are much lower for lenders who priced at 10am ET or later.



Stacy Martinez

Mortgage Broker/Owner,
Mortgage Marketplace,
LLC

www.homeloansbystacy.com

P: (503) 560-3060

M: (503) 560-3060

3723 Fairview Industrial Dr SE
Salem OR 97302
2227274

