

MBS & TREASURY MARKETS

Daily Coverage. Industry Leading Perspective.

A message from Nickolas Inhelder:

We Make Home Happen.™

Our goal is simple:

To help every family we serve get to “Yes.”

Yes to the loan that unlocks the joy of home ownership.

Yes to the lending solution that meets every client’s unique needs and wants.

That’s why we dedicate our every resource to serve as your personal guide through the lending process, solving problems, building confidence. Aslan has access to every lending option leading to the purchase or refinance of a residential home loan.

This is more than work for us. It is our unique joy in this life to share our collective skill, creativity, and care to bring you and your family right to where you belong.

Let’s make home happen.

CONTACT ME TODAY



Nickolas Inhelder

Mortgage Broker, In Clear To Close - InCTC LLC

www.AslanHLC.com

P: (720) 446-8778

M: (858) 229-9533

nick@inclearclose.com

1777 S. Harrison St.

Denver CO 80210

2037157 - CO, FL

2656899 - AL, CO, FL, SD

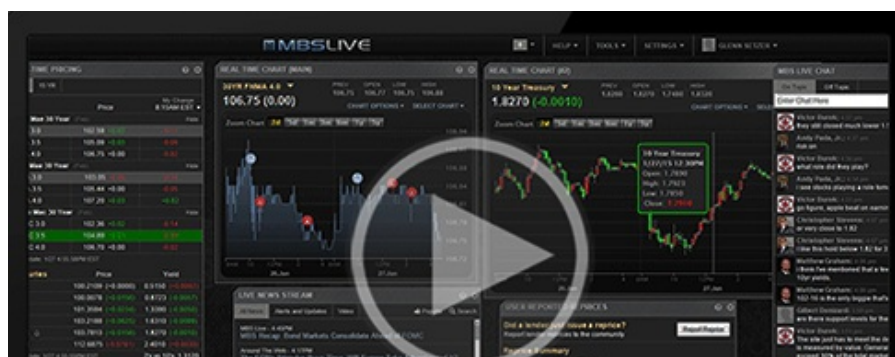
MBS Recap: Volatility Picked Up After a Slow Start



Volatility Picked Up After a Slow Start

MBS Recap Matthew Graham | 4:26 PM

This morning, more than halfway through the international trading day, bonds were on track for the narrowest trading range since February 24th. The low volatility didn't last. Sellers surfaced in response to several war-related headlines. Bond yields followed oil prices higher from 9am through 1pm ET. That said, it was still a fairly light day of movement in bonds with MBS only losing about an eighth of a point depending on when you look and 10yr yields up 3bps at 4.31+ in the final hour of trading.





Watch the Video

MBS Morning

9:33 AM Slowest Day in Over a Month. No Reaction to Data

Alert

10:04 AM Down an Eighth From Highs

Alert

12:49 PM Negative Reprice Risk Increasing

4:02 PM

Econ Data / Events

- ○ Continued Claims (Apr)/04
 - 1818.0K vs 1810K f'cast, 1794K prev
- Jobless Claims (Apr)/11
 - 207.0K vs 215K f'cast, 219K prev
- Philly Fed Business Index (Apr)
 - 26.7 vs 10 f'cast, 18.1 prev
- Philly Fed Prices Paid (Apr)
 - 59.30 vs -- f'cast, 44.70 prev

Market Movement Recap

- 08:30 AM Giving up overnight gains before data and no change since. MBS unchanged and 10yr down half a bp at 4.279 (up from lows of 4.265).
- 10:04 AM 10yr yields moved up 1bp back to unchanged levels of 4.281 and MBS are now down 1 tick (.03)
- 01:16 PM MBS down an eighth. Lows of the day. 10yr up 3.1bps at 4.315. Highs of the day.
- 03:43 PM Flat afternoon. MBS down 3 ticks (.09) and 10yr up 2.4bps at 4.308

Lock / Float Considerations

- 4/16/26 - Volatility remains light this week since Tuesday. This increases optionality for lock/float considerations, but things should change at some point in the next few business days as the 2 week ceasefire deadline approaches. Unlike big-ticket economic reports, this potential volatility won't adhere to a set schedule.

Technicals/Trends in 10yr (why 10yr)

- Ceiling/Support (can be used as "lock triggers")
 - o 4.66
 - o 4.59
 - o 4.48
- Floor/Resistance
 - o 4.05
 - o 4.12
 - o 4.19
 - o 4.28
 - o 4.34
 - o 4.40

MBS & Treasury Markets



MBS

30YR UMBS 5.0
30YR UMBS 5.5
30YR GNMA 5.0

US Treasuries

10 YR	4.315%	+0.031%
2 YR	3.776%	+0.014%
30 YR	4.938%	+0.040%
5 YR	3.918%	+0.024%

[Open Dashboard](#)

[Share This](#)