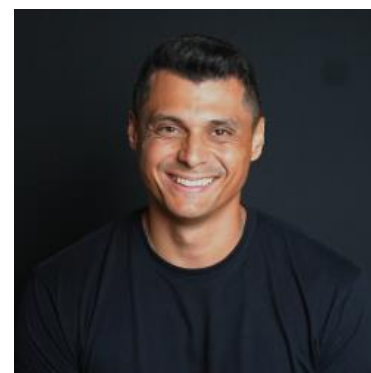


# MBS & TREASURY MARKETS

Daily Coverage. Industry Leading Perspective.

## **ALERT:** Lows of The Day

Selling has been slow and steady since the open. This alert doesn't indicate a specifically scary dip in prices. Rather, it's a heads up that the modest selling now accounts for an eighth of a point drop versus many lenders' rate sheet print times. As such, negative reprices can't be ruled out for the jumpier lenders. That said, risks would be higher if we lose a few more ticks.



### Will Caban

The Mortgage HUB

[www.FinanceWith.Us](http://www.FinanceWith.Us)

M: (718) 310-8825

[will@themortgagehub.com](mailto:will@themortgagehub.com)

2525 Ponce De Leon Blvd.  
Coral Gables FL 33134

