

MORTGAGE RATE WATCH

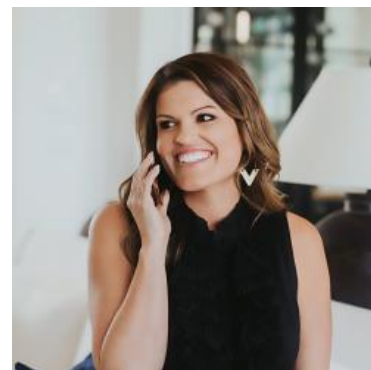
Daily Coverage. Industry Leading Perspective.

Mortgage Rates Maintaining a Tight Range Amid War-Related Uncertainty

Rates remain focused on oil prices and war-related developments. With yesterday's ceasefire extension and today's ambiguity over the time frame of that extension, rates are in a distinct holding pattern until the next phase of escalation/de-escalation comes into better focus.

For now, the market is generally betting on de-escalation as seen in stocks being near all-time highs and bond yields (aka "rates") being well off the highs seen in late March.

In this environment, day to day rate movement is fairly incidental. Today's installment brought modest improvement versus yesterday's latest levels, but the average lender remains in the same tight range (6.29-6.33 for a best-case scenario 30yr fixed) that's been intact for over a week now.



Ashlynn Kelso

Senior Loan Officer, RWM
Home Loans

www.ashlynnkelsoteam.com

M: (737) 444-1002

ashlynnkelso@gmail.com

700 S Austin Ave Suite 202
Georgetown Texas 78626
1074888

