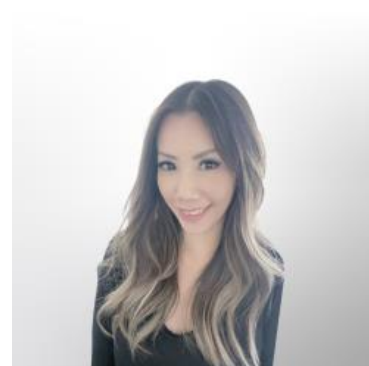




Strong Purchase Demand Drives Solid Week For Mortgage Applications

Mortgage applications surged last week, posting a strong rebound as declining rates and improving market sentiment drove broad-based gains. The Mortgage Bankers Association (MBA) reported a **7.9% increase** on a seasonally adjusted basis for the week ending April 17.

Both refinance and purchase activity contributed to the increase, with the Refinance Index rising **6%** from the previous week and standing **52%** higher than one year ago. Purchase applications showed even stronger momentum, climbing **10%** week over week and up **14%** on an annual basis – a notable shift after recent softness.



VIVIENNE WONG

Mortgage Loan Consultant,
Blue Financial Group

www.bluefinancialgroup.com

P: (714) 364-4603

M: (626) 833-3237

vivienne@bluefinancialgroup.com

3230 E Imperial Hwy, Suite 300
Brea CA 92821

NMLS#: 320700



Jason Yau

Realtor, Fusion Home
Group

www.fusionhomegroup.com

P: (626) 283-2707

jason@fusionhomegroup.com

15335 Fairfield Ranch Rd. #100
Chino Hills CA 91709

DRE# 01897740





The improvement comes as mortgage rates moved lower, with the average 30-year fixed rate declining to **6.35%**. The drop was driven in part by easing geopolitical tensions and lower oil prices, which helped stabilize financial markets and restore some borrower confidence.

MBA's Mike Fratantoni said, "Mortgage rates declined last week as financial markets responded positively to the Middle East ceasefire and the lower trend in oil prices... purchase application volume increased an even stronger 10 percent and was up 14 percent compared to last year's pace. Despite the geopolitical uncertainty, housing demand is being supported by a still resilient job market, and homebuyers are experiencing a buyer's market in most of the country..."

Application composition shifted slightly away from refinancing, with refinance share decreasing to **44.2%** from 45.5% the prior week. ARM share also declined to **8.0%**. FHA share held steady at **18.2%**, while VA share decreased to **15.0%** and USDA share remained unchanged at **0.5%**.

Mortgage Rate Summary:

- **30yr Fixed:** 6.35% (from 6.42%) | **Points:** 0.61 (from 0.62)
- **15yr Fixed:** 5.75% (from 5.85%) | **Points:** 0.69 (from 0.73)
- **Jumbo 30yr:** 6.43% (from 6.48%) | **Points:** 0.45 (from 0.46)
- **FHA:** 6.10% (from 6.14%) | **Points:** 0.71 (from 0.73)
- **5/1 ARM:** 5.48% (from 5.63%) | **Points:** 0.89 (from 0.46)