

# MBS & TREASURY MARKETS

Daily Coverage. Industry Leading Perspective.

## A message from John "Demo" Lender:

This is an example of the suite of **marketing tools** included in a subscription to MBS Live! This is an example of how your can co-brand business partners. Try these tools with a **free trial**.

## MBS Recap: Modest Gains After Opening Weaker



### John "Demo" Lender

VP of Lending, Demo Mortgage Co.

[mbslive.net](http://mbslive.net)

**P:** (704) 555-1212

**M:** (407) 555-1234

10014 Normal Blvd.  
Charlotte NC 28044

NMLS: 123456



### Christina "Demo" Realtor

Managing Partner, Real Estate Company, LLC.

[mbslive.net](http://mbslive.net)

**P:** (704) 555-1212

**M:** (980) 555-1212

[social+test@mbslive.net](mailto:social+test@mbslive.net)

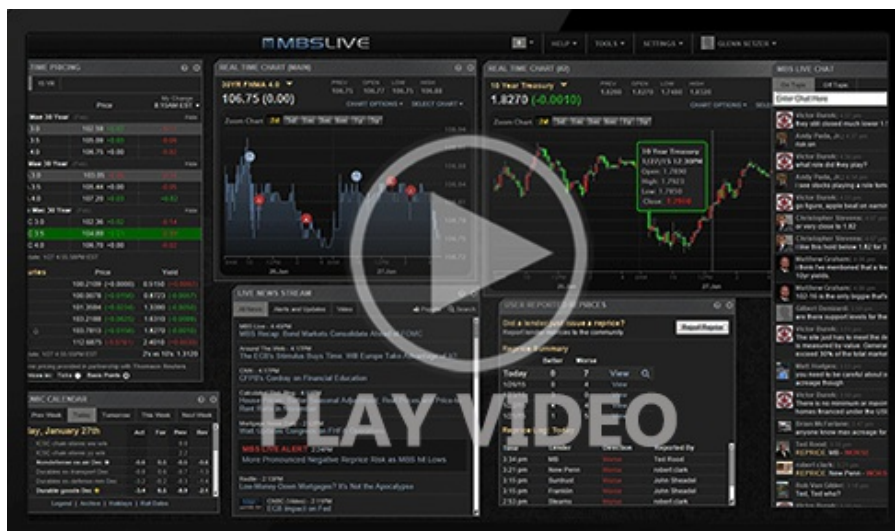
12954 S. Broad St.  
Charlotte NC 28031



# Modest Gains After Opening Weaker

MBS Recap | Matthew Graham | 4:14 PM

Tuesday ended up being a uneventful trading session despite 10yr yields hitting 3-week highs. Those highs were in place right at the open and things gradually improved from there. Markets are expressing a token amount of concern over the lack of progress on US/Iran peace, which continues to be the biggest potential market mover. Notably, there was also an obvious reaction to Consumer Confidence data today (even though it was very small). This lets us know we can't tune out other econ data just because the broader momentum is more likely tied to geopolitical developments.



[Watch the Video](#)

## MBS Morning

10:27 AM Highest Yields in 3 Weeks as US Shuns Iran Proposal

3:47 PM

## Econ Data / Events

- ○ ADP Employment Change Weekly
  - 39.25K vs -- f'cast, 54.75K prev
- Case Shiller Home Prices-20 y/y (Feb)
  - 0.9% vs 1.1% f'cast, 1.2% prev
- CaseShiller 20 mm nsa (Feb)
  - 0.4% vs -- f'cast, -0.1% prev

- FHFA Home Price Index m/m (Feb)
  - 0.0% vs 0.2% f'cast, 0.1% prev
- FHFA Home Prices y/y (Feb)
  - 1.7% vs -- f'cast, 1.6% prev
- Consumer Confidence
  - 92.8 vs 89.0 f'cast, 92.2 prev

## Market Movement Recap

- 09:14 AM Modestly weaker overnight. 10yr up 2bps at 4.362 and MBS down 3 ticks (.09).
- 11:07 AM MBS down an eighth and 10yr up 1.8bps at 4.359
- 02:29 PM MBS down an eighth and 10yr up 1.5bps at 4.357. No reaction to 7 year auction

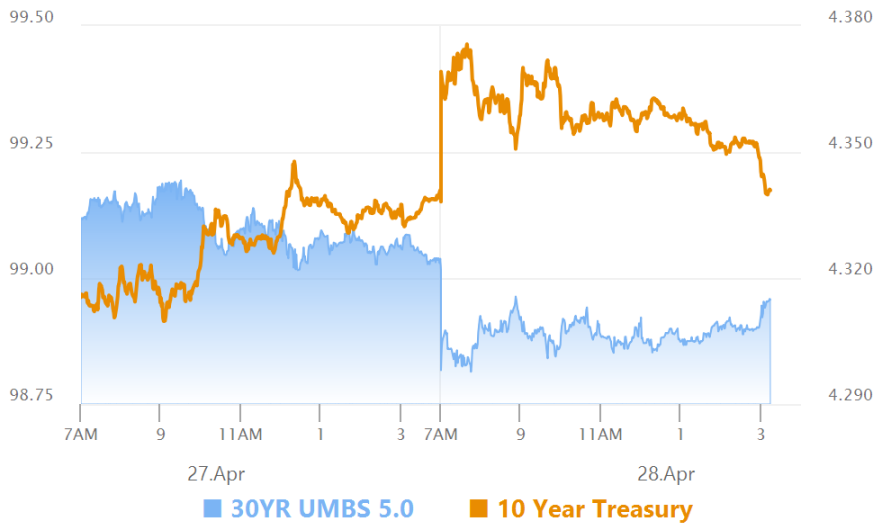
## Lock / Float Considerations

- 4/28/26 - Minimal day-over-day change. Minimal headline-driven volatility, but bonds are pushing the weaker end of the multi-week range. Any strong showing (i.e. ceiling bounce) between 4.35 and 4.42 would be reassuring for risk-tolerant clients seeking to "play the range." Fed day is not expected to be volatile, although non-Fed headlines could still move the needle.

## Technicals/Trends in 10yr (why 10yr)

- Ceiling/Support (can be used as "lock triggers")
  - 4.66
  - 4.59
  - 4.48
- Floor/Resistance
  - 4.05
  - 4.12
  - 4.19
  - 4.28
  - 4.34
  - 4.40

## MBS & Treasury Markets



### MBS

- 30YR UMBS 5.0
- 30YR UMBS 5.5
- 30YR GNMA 5.0
- 15YR UMBS-15 5.0

### US Treasuries

10 YR	4.341%	0.000%
2 YR	3.832%	+0.036%
30 YR	4.932%	-0.019%
5 YR	3.972%	+0.020%

Open Dashboard

Share This