

MBS & TREASURY MARKETS

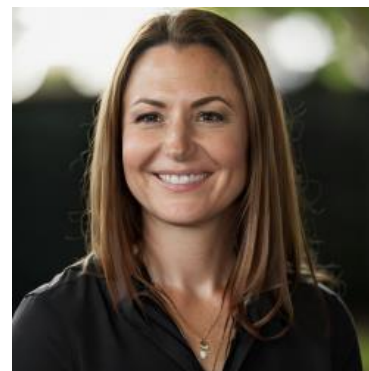
Daily Coverage. Industry Leading Perspective.

ALERT: MBS Now Down 3/8ths on The Day

Additional incremental weakness after headlines regarding Iran attacking UAE (including a fire at an oil export terminal). MBS are now down just over 3/8ths of a point on the day, more than a quarter point from the highs, and at least an eighth of a point from most lenders' rate sheet print times.

Jumpy lenders could justify a negative reprice already, but it would be more likely if we lose 2 more ticks (.06).

10yr up 6.2bps at 4.436, testing an important intermediate ceiling.



Cassie Winterowd

Mortgage Lender, M5
Financial

www.cwfriendlylending.com

M: (858) 999-1778

Cassie@cwfriendlylending.com

5151 Shoreham Pl
San Diego CA 92122
355601

