

MBS & TREASURY MARKETS

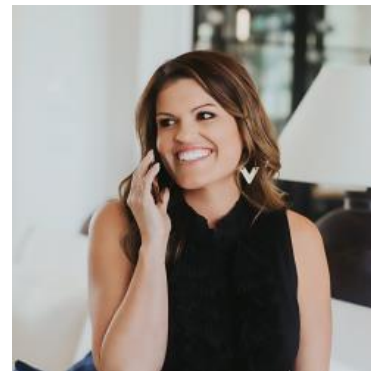
Daily Coverage. Industry Leading Perspective.

ALERT: Negative Reprices Becoming More Likely

The market is actively reacting to a swath of war-related headlines that all generally speak to the notion of escalation in the Iran war. Bond yields are moving up with oil prices, but are also exhibiting some of their own negative momentum even when oil prices have plateaued.

10yr yields are up 8bps at 4.454--now breaking up and over the most recent technical ceiling at 4.42.

MBS are down 18 ticks (.56) on the day and more than a quarter point from most lenders' rate sheet print times. This makes negative reprices increasingly likely. Several lenders have already repriced.



Ashlynn Kelso

Senior Loan Officer, RWM
Home Loans

www.ashlynnkelsoteam.com

M: (737) 444-1002

ashlynnkelso@gmail.com

700 S Austin Ave Suite 202
Georgetown Texas 78626
1074888

