

MBS & TREASURY MARKETS

Daily Coverage. Industry Leading Perspective.

A message from Nickolas Inhelder:

We Make Home Happen.™

Our goal is simple:

To help every family we serve get to “Yes.”

Yes to the loan that unlocks the joy of home ownership.

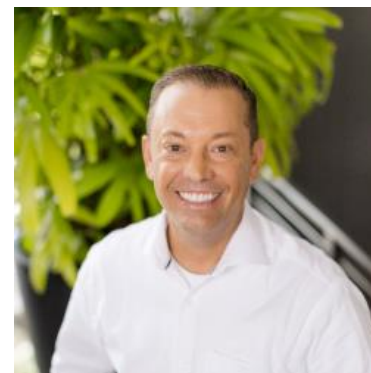
Yes to the lending solution that meets every client’s unique needs and wants.

That’s why we dedicate our every resource to serve as your personal guide through the lending process, solving problems, building confidence. Aslan has access to every lending option leading to the purchase or refinance of a residential home loan.

This is more than work for us. It is our unique joy in this life to share our collective skill, creativity, and care to bring you and your family right to where you belong.

Let’s make home happen.

CONTACT ME TODAY



Nickolas Inhelder

Mortgage Broker, In Clear To Close - InCTC LLC

www.AslanHLC.com

P: (720) 446-8778

M: (858) 229-9533

nick@inclearclose.com

1777 S. Harrison St.

Denver CO 80210

2037157 - CO, FL

2656899 - AL, CO, FL, SD

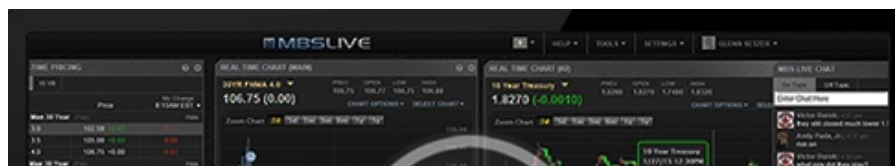


MBS Recap: Markets Hit by Glut of Escalation Headlines

Markets Hit by Glut of Escalation Headlines

MBS Recap Matthew Graham | 4:07 PM

Monday's trading session ended up being as simple as it was unpleasant. Bonds lost ground somewhat sharply as war-related headlines kept adding up to additional escalation. Highlights include overnight reports of Iran hitting a U.S. warship with missiles, multiple reports of UAE air defenses being activated, and damage/fire at a UAE oil export terminal. While bonds had a few moments of independence, they were broadly driven by rising oil prices associated with the aforementioned headlines.





Watch the Video

Alert

9:51 AM MBS Down Just Over an Eighth

MBS Morning

10:09 AM Weaker Start. Bonds Not Recovering With Oil So Far

Alert

11:34 AM MBS Now Down 3/8ths on The Day

Alert

12:21 PM Negative Reprices Becoming More Likely

3:32 PM

Econ Data / Events

- ○ ISM Manufacturing Employment (Apr)
 - 46.4 vs 49 f'cast, 48.7 prev
- ISM Manufacturing PMI (Apr)
 - 52.7 vs 53 f'cast, 52.7 prev
- ISM Mfg Prices Paid (Apr)
 - 84.6 vs 80 f'cast, 78.3 prev

Market Movement Recap

- 09:20 AM moderately weaker overnight. 10yr up 3.5bps at 4.41 and MBS down 7 ticks (-.22).
- 11:31 AM Weakest levels after headlines regarding Iran attacking UAE. MBS down 3/8ths and 10yr up 6bps at 4.435

Lock / Float Considerations

- 5/4/26 - Despite Friday's hopeful technical set-up, yields were unable to close below our confirmation target of 4.37. Now today, they're up to multi-week highs and above the 4.42% technical level. Of course a sweeping peace agreement with Iran could change the tone at any moment, but until then, a defensive strategy makes the most sense.

Technicals/Trends in 10yr (why 10yr)

- Ceiling/Support (can be used as "lock triggers")
 - o 4.66
 - o 4.59
 - o 4.48
- Floor/Resistance
 - o 4.05
 - o 4.12
 - o 4.19
 - o 4.28
 - o 4.34
 - o 4.40

MBS & Treasury Markets



MBS

30YR UMBS 5.0
30YR UMBS 5.5
30YR GNMA 5.0
15YR UMBS-15 5.0

US Treasuries

10 YR	4.438%	+0.063%
2 YR	3.950%	+0.067%
30 YR	5.017%	+0.055%
5 YR	4.083%	+0.066%

[Open Dashboard](#)

[Share This](#)