

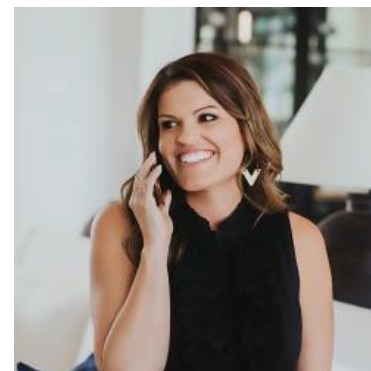
# MBS & TREASURY MARKETS

Daily Coverage. Industry Leading Perspective.

## **ALERT:** MBS Down More Than an Eighth From Highs

MBS are down more than eighth of a point from the AM highs and 10yr yields are up 4.3bps at 4.451 following a slew of war-related headlines (with the gist being that Trump is not in a rush to end the war).

Most lenders were not yet out with rate sheets when MBS were at their highs (8:45 - 9:00am ET), so intraday repricing risk is limited. This is more of a heads-up for those with overnight price protection that you are almost certainly looking at higher rates this morning.



### Ashlynn Kelso

Senior Loan Officer, RWM  
Home Loans

[www.ashlynnkelsoteam.com](http://www.ashlynnkelsoteam.com)

**M:** (737) 444-1002

[ashlynnkelso@gmail.com](mailto:ashlynnkelso@gmail.com)

700 S Austin Ave Suite 202  
Georgetown Texas 78626  
1074888

