

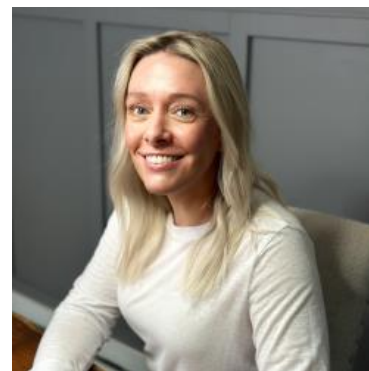
MBS & TREASURY MARKETS

Daily Coverage. Industry Leading Perspective.

ALERT: Weakest Levels

MBS are down another 2-3 ticks (.06 - .09) from the previous lows, slightly increasing negative reprice risk.

10yr yields are up 4.8bps at 4.457--not much higher than previous highs. There haven't been any notable moves since the selling mentioned in the last alert.



Shannon McAlister

Luminate Home Loans

<https://home-owners-pdx.com/>

M: (503) 516-8881

shannon.mcalister@goluminate.com

NMLS885982

Member
FDIC

