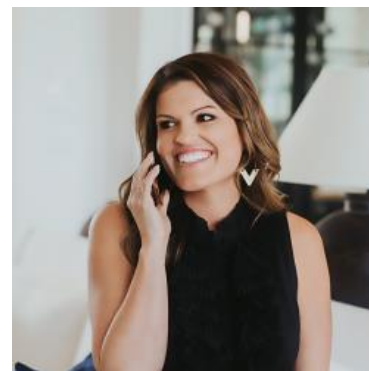


MBS & TREASURY MARKETS

Daily Coverage. Industry Leading Perspective.

ALERT: New Lows and Slightly More Reprice Risk

Negative reprice risk was fairly limited when MBS hit their lows earlier today. Prices are now down another 3 ticks (.09) since then and nearly a quarter point from most lenders' rate sheet print times. This makes negative reprices a more legitimate risk heading into the final hour.



Ashlynn Kelso

Senior Loan Officer, RWM
Home Loans

www.ashlynnkelsoteam.com

M: (737) 444-1002

ashlynnkelso@gmail.com

700 S Austin Ave Suite 202
Georgetown Texas 78626
1074888

