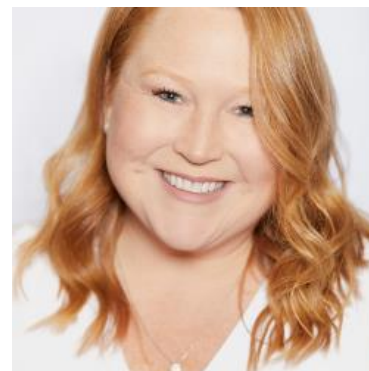


MBS & TREASURY MARKETS

Daily Coverage. Industry Leading Perspective.

ALERT: New Lows and Slightly More Reprice Risk

Negative reprice risk was fairly limited when MBS hit their lows earlier today. Prices are now down another 3 ticks (.09) since then and nearly a quarter point from most lenders' rate sheet print times. This makes negative reprices a more legitimate risk heading into the final hour.



Corri Klebaum
Certified Mortgage
Advisor, Edge Home
Finance

teamklebaum.com

P: (541) 605-2154

M: (503) 975-5005

corri@teamklebaum.com

1214 Adams Ave

La Grande OR 97850

NMLS#211442

Edge Home Finance LLC | NMLS

#891464

