

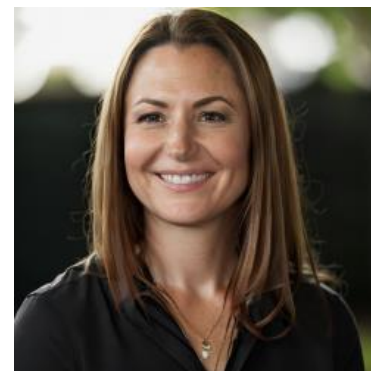
MBS & TREASURY MARKETS

Daily Coverage. Industry Leading Perspective.

ALERT: Down More Than an Eighth vs 9:30am ET

MBS are now down just over 5/8ths of a point on the day. 5 ticks (.16) of that has been seen since 9:30am, which is an early part of the window for lender rate sheet print times.

Most every lender has baked in plenty of weakness to this morning's rate sheets, so the bar for negative reprices is probably a bit higher than normal (i.e. negative reprices aren't necessarily highly likely at the moment, but we're heading in that direction).



Cassie Winterowd

Mortgage Lender, M5
Financial

www.cwfriendlylending.com

M: (858) 999-1778

Cassie@cwfriendlylending.com

5151 Shoreham Pl
San Diego CA 92122
355601

