

MBS & TREASURY MARKETS

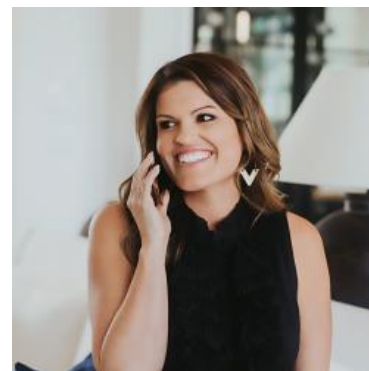
Daily Coverage. Industry Leading Perspective.

ALERT: Down More Than an Eighth From Highs

Bonds have been losing ground slowly this morning after opening at sharply stronger levels. MBS are down 5 ticks (.16) from the highs of the morning and some lenders are seeing an eighth of a point of weakness since rate sheet print times.

Negative reprices are rare in this scenario, but they could technically be justified by jumpy, early lenders.

MBS are still up nearly 3/8ths on the day and 10yr yields are down 5.6bps at 4.503.



Ashlynn Kelso

Senior Loan Officer, RWM
Home Loans

www.ashlynnkelsoteam.com

M: (737) 444-1002

ashlynnkelso@gmail.com

700 S Austin Ave Suite 202
Georgetown Texas 78626
1074888

