

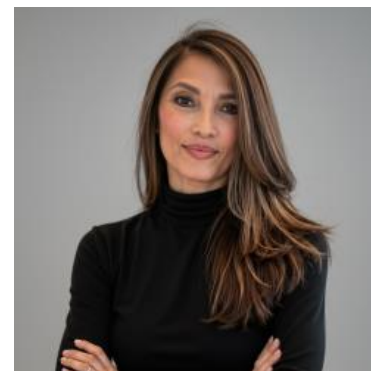
MBS & TREASURY MARKETS

Daily Coverage. Industry Leading Perspective.

ALERT: Weakest Levels

MBS are now unchanged on the day and down an eighth of a point from some lenders' rate sheet print times. This is more of a heads-up that the jumpiest lenders could be close to considering a negative reprice. That said, we have yet to see bonds meaningfully challenge a break through the weakest levels yet.

10yr yields are still 0.2bps on the day at 4.487



CAROL SATIZABAL

Sales Manager, Contour
Mortgage

contourmortgage.com/carol-satizabal

P: (516) 415-8199

M: (516) 415-8199

990 Stewart Ave
Garden City New York 11530
818738