

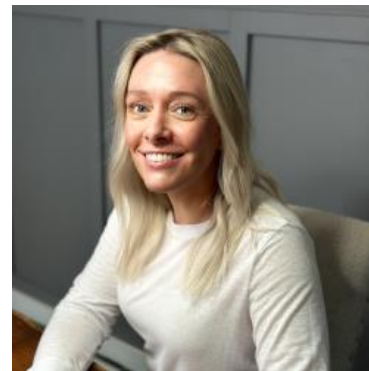
# MBS & TREASURY MARKETS

Daily Coverage. Industry Leading Perspective.

## ALERT: Weakest Levels

MBS are now unchanged on the day and down an eighth of a point from some lenders' rate sheet print times. This is more of a heads-up that the jumpiest lenders could be close to considering a negative reprice. That said, we have yet to see bonds meaningfully challenge a break through the weakest levels yet.

10yr yields are still 0.2bps on the day at 4.487



**Shannon McAlister**

Luminate Home Loans

<https://home-owners-pdx.com/>

**M:** (503) 516-8881

[shannon.mcalister@goluminate.com](mailto:shannon.mcalister@goluminate.com)

NMLS885982

