

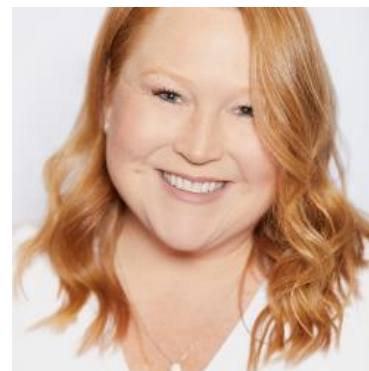
MBS & TREASURY MARKETS

Daily Coverage. Industry Leading Perspective.

ALERT: Sharply Weaker on War-Related Headlines

Full coverage of reasons is in the AM commentary.

MBS are now down 3/8ths of a point on the day and 10 ticks (.31) from intraday highs. 10s are up 6bps at 4.497.



Corri Klebaum
Certified Mortgage
Advisor, Edge Home
Finance

teamklebaum.com

P: (541) 605-2154

M: (503) 975-5005

corri@teamklebaum.com

1214 Adams Ave

La Grande OR 97850

NMLS#211442

Edge Home Finance LLC | NMLS

#891464

