

MORTGAGE RATE WATCH

Daily Coverage. Industry Leading Perspective.

Mortgage Rates Lower Today, But in a Narrow Range

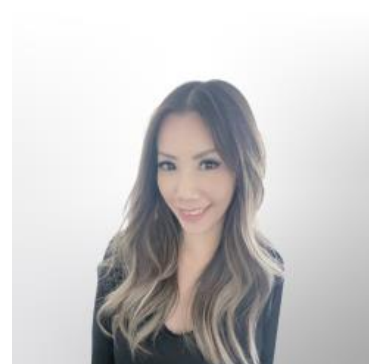
After hitting long-term highs on May 19th, mortgage rates dropped somewhat quickly by May 26th. Ever since then, they've been moving back and forth in a very narrow range. Today's movement happened to be the good kind with the average lender cutting top-tier 30yr fixed rates by 0.03%.

As always, keep in mind that mortgages are most commonly offered in 0.125% increments. When our daily rate index changes by only 0.03%, it's because we are also measuring the underlying costs associated with any given rate and extrapolating the relative impact on interest rates.

To use a crude example, let's consider two different hypothetical rate quote options yesterday and today.

- Yesterday
 - 6.625% at a cost of \$12 upfront
 - 6.50% at a cost of \$24 upfront
- Today
 - 6.625% at a cost of \$9 upfront
 - 6.50% at a cost of \$21 upfront

Now pretend you only have \$15 to spend for closing costs. You still can't afford to buy your rate down to 6.5%, and you'll still be choosing the 6.625% quote. But while the interest rate portion of your quote didn't change, the actual interest cost improved. Our index captures and expresses these improvements in a single number.



VIVIENNE WONG

Mortgage Loan Consultant,
Blue Financial Group

www.bluefinancialgroup.com

P: (714) 364-4603

M: (626) 833-3237

vivienne@bluefinancialgroup.com

3230 E Imperial Hwy, Suite 300
Brea CA 92821

NMLS#: 320700

