

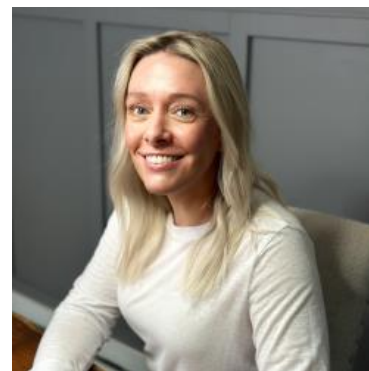
MBS & TREASURY MARKETS

Daily Coverage. Industry Leading Perspective.

ALERT: Negative Reprices Becoming More Likely

MBS are now down 5 ticks (.16) on the day and nearly a quarter point from morning rate sheet print times. Negative reprices are becoming likely among the jumpier lenders and increasingly possible for others.

There's no new news behind the weakness. Oil is only contributing modestly. Most the selling is bond-market-specific.



Shannon McAlister

Luminate Home Loans

<https://home-owners-pdx.com/>

M: (503) 516-8881

shannon.mcalister@goluminate.com

NMLS885982

Member
FDIC

