

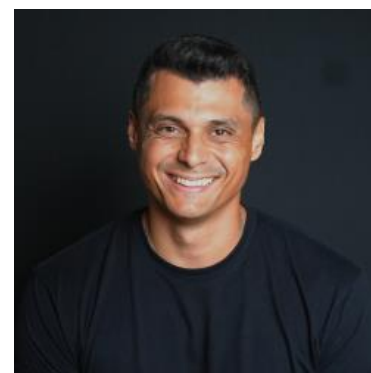
MBS & TREASURY MARKETS

Daily Coverage. Industry Leading Perspective.

ALERT: Negative Reprices Becoming More Likely

MBS are now down 5 ticks (.16) on the day and nearly a quarter point from morning rate sheet print times. Negative reprices are becoming likely among the jumpier lenders and increasingly possible for others.

There's no new news behind the weakness. Oil is only contributing modestly. Most the selling is bond-market-specific.



Will Caban

The Mortgage HUB

www.FinanceWith.Us

M: (718) 310-8825

will@themortgagehub.com

2525 Ponce De Leon Blvd.
Coral Gables FL 33134

