

# MBS & TREASURY MARKETS

Daily Coverage. Industry Leading Perspective.

## MBS Recap: Decent Gains, But Some Signs of Resistance



### VIVIENNE WONG

Mortgage Loan Consultant,  
Blue Financial Group

[www.bluefinancialgroup.com](http://www.bluefinancialgroup.com)

**P:** (714) 364-4603

**M:** (626) 833-3237

[vivienne@bluefinancialgroup.com](mailto:vivienne@bluefinancialgroup.com)

3230 E Imperial Hwy, Suite 300  
Brea CA 92821

NMLS#: 320700



### Jason Yau

Realtor, Fusion Home  
Group

[www.fusionhomegroup.com](http://www.fusionhomegroup.com)

**P:** (626) 283-2707

[jason@fusionhomegroup.com](mailto:jason@fusionhomegroup.com)

15335 Fairfield Ranch Rd. #100  
Chino Hills CA 91709

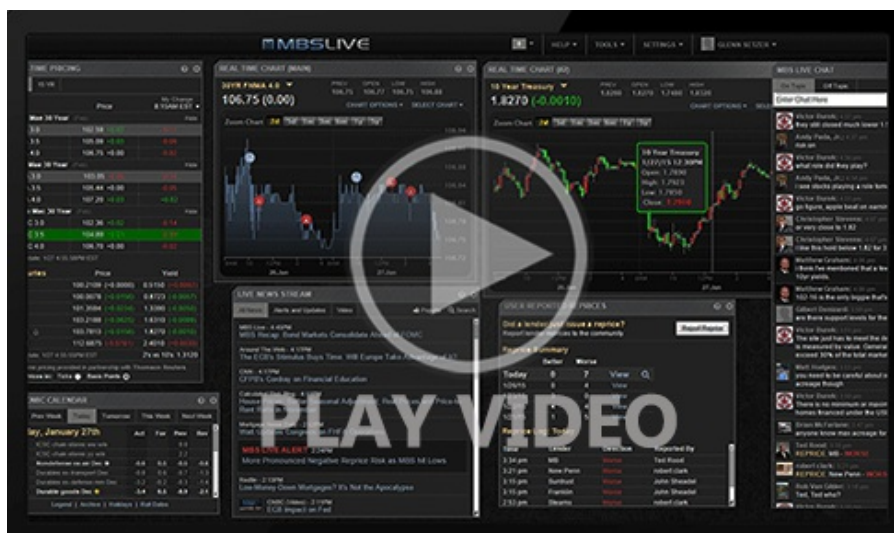
DRE# 01897740



# Decent Gains, But Some Signs of Resistance

MBS Recap | Matthew Graham | 4:23 PM

Bonds improved overnight at the start of European trading and made additional gains in concert with lower oil prices during the domestic session. Notably, the gains met resistance at 4.42%--a resistance level that's been on our radar since the last bounce a few weeks ago. Technical levels certainly don't predict the future, but they can provide a framework for measuring the pace of change in trading levels. If bonds are weaker in the morning, it would act as confirmation that the initial response to the Iran peace deal has played out. In addition, there's potential volatility surrounding the Fed announcement, almost exclusively reserved for feeling out any visible shifts from new Fed Chair Kevin Warsh.



Watch the Video

## MBS Morning

11:55 AM Stronger Overnight as Europe Trades Peace

4:08 PM

## Econ Data / Events

- ○ ADP Employment Change Weekly
  - 25.5K vs -- f'cast, 29K prev
- Building Permits (May)
  - 1.413M vs 1.42M f'cast, 1.423M prev
- Housing starts number mm (May)
  - 1.177M vs 1.43M f'cast, 1.465M prev
- Import prices mm (May)

- Import prices firm (May)
- 1.9% vs 1.0% f'cast, 1.9% prev

## Market Movement Recap

- 08:52 AM Stronger overnight as Europe trades the peace deal. MBS up 6 ticks (.19) and 10yr down 4bps at 4.438
- 11:55 AM Best levels. MBS up 6 ticks (.19) and 10yr down 5bps at 4.428
- 03:03 PM MBS up 10 ticks (.31) and 10yr down 5.3bps at 4.425

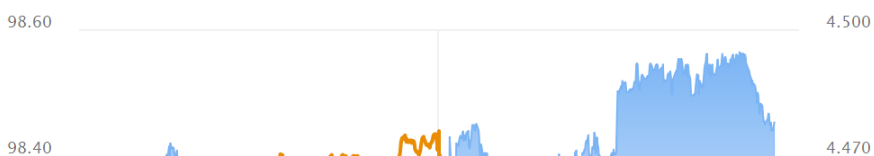
## Lock / Float Considerations

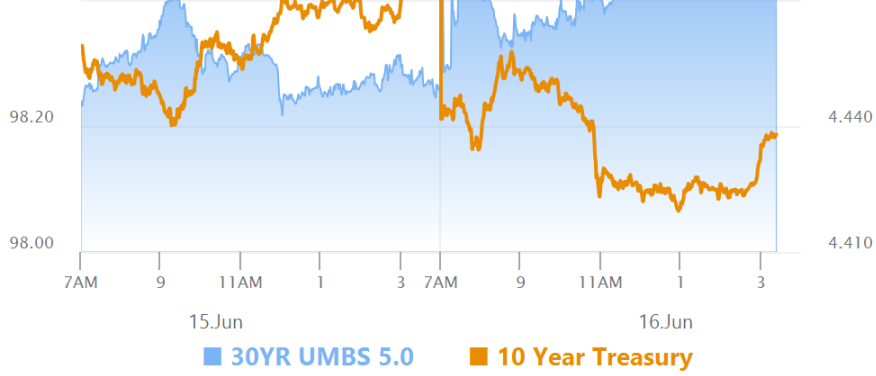
- 6/16/26 - From a technical standpoint, there's some suggestion of caution after 10yr yields hit the 4.42% floor today and bounced incessantly before ultimately heading slightly higher in the afternoon. Anyone who'd been floating with a 4.57% lock trigger/ceiling would be inclined to adopt a more defensive stance until and unless 4.42% is definitively broken.

## Technical/Trends in 10yr (why 10yr)

- Ceiling/Support (can be used as "lock triggers")
  - 4.80
  - 4.72
  - 4.66
  - 4.59
  - 4.51
- Floor/Resistance
  - 4.19
  - 4.28
  - 4.34
  - 4.43

## MBS & Treasury Markets





### MBS

30YR UMBS 5.0	+
30YR UMBS 5.5	+
30YR GNMA 5.0	+
15YR UMBS-15 5.0	+

### US Treasuries

10 YR	4.438%	-0.039%
2 YR	4.056%	-0.017%
30 YR	4.940%	-0.038%
5 YR	4.162%	-0.031%

[Open Dashboard](#)

[Share This](#)