

# MBS & TREASURY MARKETS

Daily Coverage. Industry Leading Perspective.



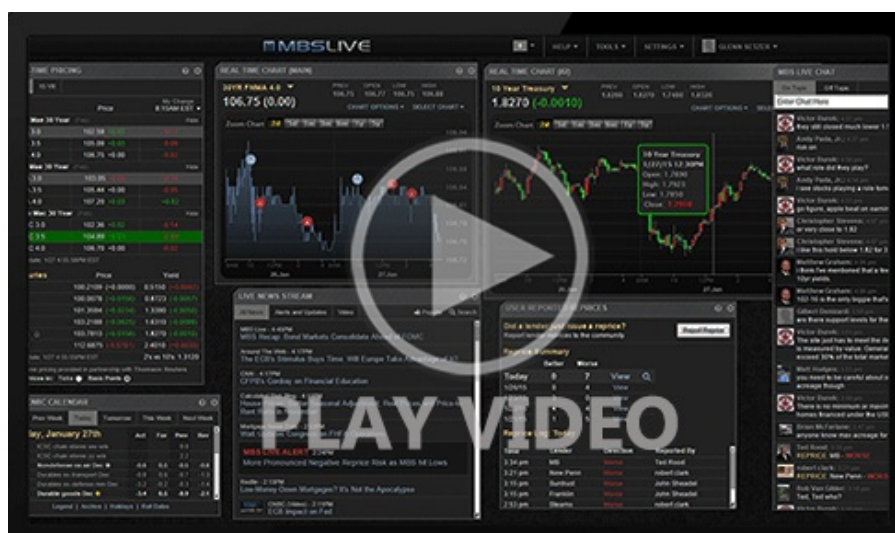
## MBS Recap: Perfectly Acceptable Conclusion to a Potentially Volatile Week

**Mark Ingram**  
Broker Owner, Ingram  
Company - CA & TX  
[www.ingramcompany.net](http://www.ingramcompany.net)  
P: (949) 378-1701  
M: (949) 378-1701  
170 E. 17th St. #200G  
Costa Mesa CA 92627  
CADRE: 01226769  
NMLS: 371141 / 358879

## Perfectly Acceptable Conclusion to a Potentially Volatile Week

MBS Recap | Matthew Graham | 3:19 PM

With markets closed for the Juneteenth holiday on Friday, Thursday marked the end of the trading week. Considering the sell-off on Wednesday afternoon, the week had the potential to end on an uncomfortably volatile note. Instead, bonds pushed back nicely in the other direction--even though MBS didn't recoup as much of their losses as 10yr Treasuries. True, there is some sense of foreboding in the inability of 10yr yields to move below 4.42%, but all told, the week was actually surprisingly calm after factoring in Thursday's gains.



Watch the Video

MBS Morning

10:04 AM Deal Signed. Warsh Digested. Bonds Stabilizing

Update

## Econ Data / Events

---

- ○ Continued Claims (Jun)/06
  - 1,810K vs 1800K f'cast, 1795K prev
- Jobless Claims (Jun)/13
  - 226K vs 225K f'cast, 229K prev
- Philly Fed Business Index (Jun)
  - 10.3 vs 10 f'cast, -0.4 prev
- Philly Fed Prices Paid (Jun)
  - 53.20 vs -- f'cast, 47.90 prev

## Market Movement Recap

---

- 08:55 AM Bonds recover much of post-Fed sell-off overnight, but mostly in the long end. 2yr yields lost more ground. 10yr yields are down 5bps at 4.446. MBS are up just under a quarter point.
- 10:24 AM MBS up 9 ticks (.28) and 10yr down 6.3bps at 4.434
- 03:02 PM MBS up 5 ticks (.16) and 10yr down 4.2bps at 4.454

## Lock / Float Considerations

---

- 6/18/26 -Bonds recovered enough to mitigate the defensive takeaways from yesterday's Fed response. That said, until 10's can commit to a solid break below 4.42, it makes sense for risk-averse clients to remain defensive.

## Technicals/Trends in 10yr (why 10yr)

---

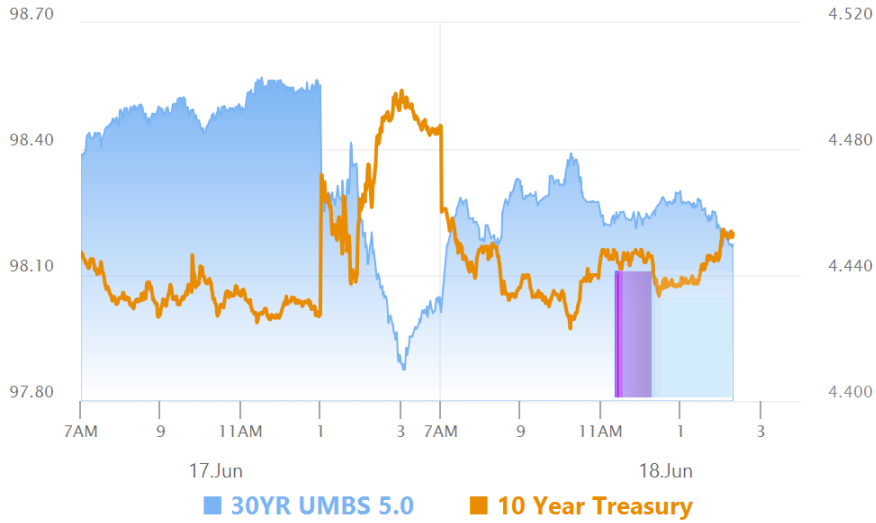
- Ceiling/Support (can be used as "lock triggers")
  - 4.80
  - 4.72
  - 4.66
  - 4.59

○ 4.51

- Floor/Resistance

- 4.19
- 4.28
- 4.34
- 4.43

## MBS & Treasury Markets



### MBS

30YR UMBS 5.0	+
30YR UMBS 5.5	+
30YR GNMA 5.0	+
15YR UMBS-15 5.0	

### US Treasuries

10 YR	4.454%	-0.042%
2 YR	4.179%	-0.007%
30 YR	4.903%	-0.028%
5 YR	4.230%	-0.037%

[Open Dashboard](#)

[Share This](#)