

MBS & TREASURY MARKETS

Daily Coverage. Industry Leading Perspective.



MBS Recap: Perfectly Acceptable Conclusion to a Potentially Volatile Week



Christian Carr
Mortgage Loan Advisor,
PMP Mortgage / Your
Lender Chris

www.yourlenderchris.com
M: (650) 207-4364

5776 Stoneridge Mall Road
Pleasanton CA 94588
1466899

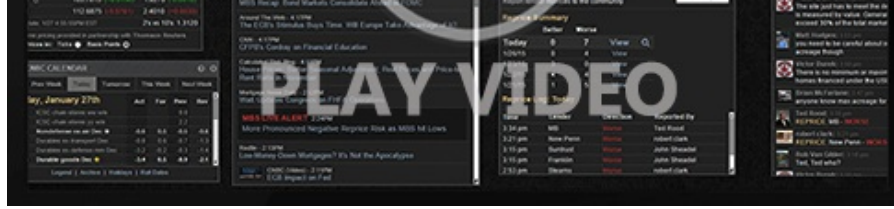


Perfectly Acceptable Conclusion to a Potentially Volatile Week

MBS Recap | Matthew Graham | 3:19 PM

With markets closed for the Juneteenth holiday on Friday, Thursday marked the end of the trading week. Considering the sell-off on Wednesday afternoon, the week had the potential to end on an uncomfortably volatile note. Instead, bonds pushed back nicely in the other direction--even though MBS didn't recoup as much of their losses as 10yr Treasuries. True, there is some sense of foreboding in the inability of 10yr yields to move below 4.42%, but all told, the week was actually surprisingly calm after factoring in Thursday's gains.





Watch the Video

MBS Morning

10:04 AM Deal Signed. Warsh Digested. Bonds Stabilizing

Update

12:20 PM Down an Eighth From Highs

12:57 PM

Econ Data / Events

- ○ Continued Claims (Jun)/06
 - 1,810K vs 1800K f'cast, 1795K prev
- Jobless Claims (Jun)/13
 - 226K vs 225K f'cast, 229K prev
- Philly Fed Business Index (Jun)
 - 10.3 vs 10 f'cast, -0.4 prev
- Philly Fed Prices Paid (Jun)
 - 53.20 vs -- f'cast, 47.90 prev

Market Movement Recap

- 08:55 AM Bonds recover much of post-Fed sell-off overnight, but mostly in the long end. 2yr yields lost more ground. 10yr yields are down 5bps at 4.446. MBS are up just under a quarter point.
- 10:24 AM MBS up 9 ticks (.28) and 10yr down 6.3bps at 4.434
- 03:02 PM MBS up 5 ticks (.16) and 10yr down 4.2bps at 4.454

Lock / Float Considerations

- 6/18/26 -Bonds recovered enough to mitigate the defensive takeaways from yesterday's Fed response. That said, until 10's can commit to a solid break below 4.42, it makes sense for risk-averse clients to remain defensive.

Technicals/Trends in 10yr (why 10yr)

- Ceiling/Support (can be used as "lock triggers")
 - o 4.80
 - o 4.72
 - o 4.66
 - o 4.59
 - o 4.51
- Floor/Resistance
 - o 4.19
 - o 4.28
 - o 4.34
 - o 4.43

MBS & Treasury Markets



MBS

30YR UMBS 5.0		+
30YR UMBS 5.5		+
30YR GNMA 5.0		+
15YR UMBS-15 5.0		

US Treasuries

10 YR	4.454%	-0.042%
2 YR	4.179%	-0.007%

30 YR

4.903%

-0.028%

5 YR

4.230%

-0.037%

[Open Dashboard](#)

[Share This](#)