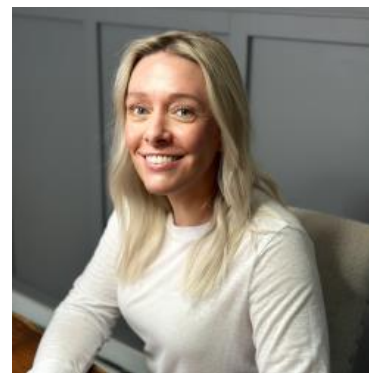


# MBS & TREASURY MARKETS

Daily Coverage. Industry Leading Perspective.

## The Day Ahead: Decent Start After PCE Comes in On-Target

The PCE price index may be a less timely report than CPI/PPI when it comes to measuring inflation in the U.S., but it's more thorough and has stronger implications for Fed policy. Traders were apparently braced for today's number to be a bit hotter. Bonds rallied moderately after core monthly PCE came in as-expected at 0.3%. Annual inflation is running at 4.1% at the headline level, and 3.4% at the core level (both in line with expectations. Bonds were a few bps higher in yield before the data and are now a few bps lower heading into the 9am hour.



**Shannon McAlister**

Luminate Home Loans

<https://home-owners-pdx.com/>

M: (503) 516-8881

shannon.mcalister@goluminate.com

NMLS885982

