

MBS & TREASURY MARKETS

Daily Coverage. Industry Leading Perspective.



MBS Recap: Early Gains. Flat Afternoon. MBS Underperform



Faramarz Moeen-Ziai

Branch Manager, FMZ Loans

fmzloans.com

M: (415) 377-1147

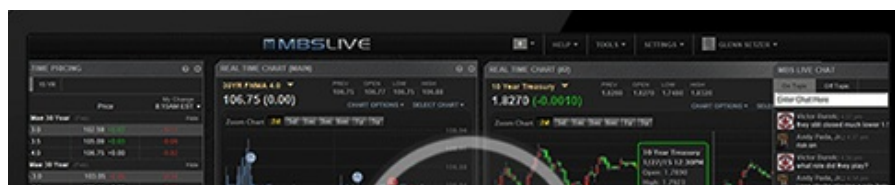
3130 Crow Canyon Pl Suite 415
San Ramon CA 94583
342090



Early Gains. Flat Afternoon. MBS Underperform

MBS Recap | Matthew Graham | 4:50 PM

Friday ended up offering a boring conclusion to a week that had at least some measure of excitement on Wednesday. Bonds started a hair stronger, lost ground modestly and then rallied to the day's best levels by noon. From there, 10yr yields went perfectly sideways in an ultra narrow range. MBS managed to hang on to just barely positive levels but gave up about an eighth of a point during the time Treasuries were holding steady. Technically, this is underperformance in a vacuum, but in the bigger picture, MBS have been doing just fine in relative terms. As a reminder, next week is 3.5 days thanks to Independence Day observance, and the jobs report will be on Thursday morning.





Watch the Video

MBS Morning

10:01 AM Sideways Start, Quiet Calendar, Quarter-End Volatility Potential

3:15 PM

Market Movement Recap

- 09:04 AM Stronger overnight, but bouncing back a bit now. 10yr up 0.3bps and MBS unchanged.
- 12:04 PM Near strongest levels. MBS up an eighth and 10yr down 1.8bps at 4.373
- 04:29 PM Off strongest levels in MBS, now up only 2 ticks (.06). 10yr down 1.9bps at 4.372

Lock / Float Considerations

- 6/26/26 - Some additional reassurance from a calm end to the week. The caveat continues to be the random nature of potential quarter-end volatility. We're also not entirely out of the woods on war-related volatility although the bond market needs stronger evidence than the typical alarmist newswire. Next week's biggest potential volatility surrounds big-ticket econ data.

Technicals/Trends in 10yr (why 10yr)

- Ceiling/Support (can be used as "lock triggers")
 - o 4.80
 - o 4.72
 - o 4.66
 - o 4.59
 - o 4.51

- Floor/Resistance

- 4.19
- 4.28
- 4.34
- 4.43

MBS & Treasury Markets



MBS

30YR UMBS 5.0	+
30YR UMBS 5.5	+
30YR GNMA 5.0	
15YR UMBS-15 5.0	+

US Treasuries

10 YR	4.375%	-0.016%
2 YR	4.093%	-0.034%
30 YR	4.868%	+0.005%
5 YR	4.133%	-0.034%

[Open Dashboard](#)

[Share This](#)