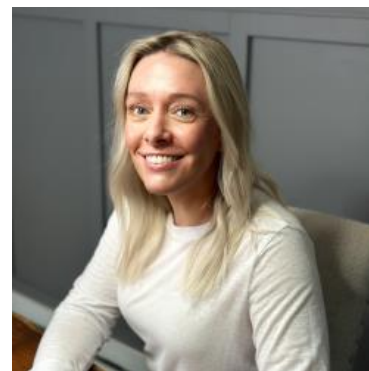


MBS & TREASURY MARKETS

Daily Coverage. Industry Leading Perspective.

The Day Ahead: Tuesday Sell-Off Sticking; Warsh and ISM On Deck

Bonds have added modestly to Tuesday's big quarter-end sell-off (a phenomenon that has nothing to do with the sorts of fundamental developments that dictate a vast majority of market movement). Thankfully, the random plumbing-related volatility is behind us as we begin the new quarter. Old-school potential volatility awaits. The morning's first order of business will be to see if Warsh says anything interesting at the SINTRA conference. After that, ISM Manufacturing data at 10am is a B+ market mover if it falls far enough from expectations.



Shannon McAlister

Luminate Home Loans

<https://home-owners-pdx.com/>

M: (503) 516-8881

shannon.mcalister@goluminate.com

NMLS885982

Member
FDIC

