

MBS & TREASURY MARKETS

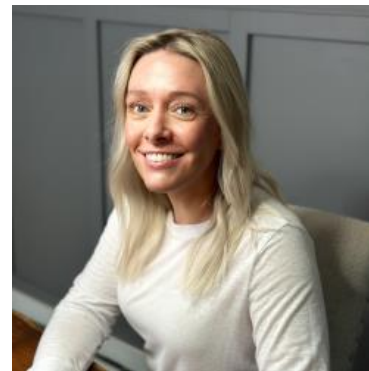
Daily Coverage. Industry Leading Perspective.

ALERT: Down an Eighth From AM Plateau

MBS are now down an eighth of a point on the day and an eighth from the price plateau seen during many lenders' rate sheet print times.

As such, the jumpier lenders are now on the threshold of considering negative reprices.

10yr yields are up 1bp at 4.562. There is no specific news or data underlying the selling and the change is very small in the big picture.



Shannon McAlister

Luminate Home Loans

<https://home-owners-pdx.com/>

M: (503) 516-8881

shannon.mcalister@goluminate.com

NMLS885982

