

MARKET SUMMARY

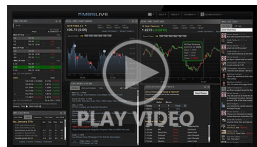
Complete Recap of Today's Market Activity

Softer Start Despite Tame ISM Manufacturing Data

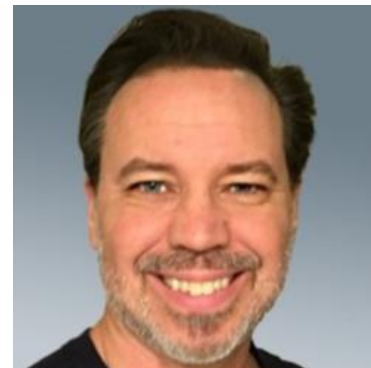
Market Summary: Monday, June 2, 2025 - 3:54PM

The ISM Manufacturing PMI has more potential than most economic reports to cause a reaction in the bond market, even if it isn't perfectly consistent. As today's only big ticket data, it was well positioned to set the tone this morning. While it may not be doing that in a resounding fashion, one could still argue that the weaker result is least helping bonds avoid additional weakness.

Latest Video Analysis



Stronger Close After Well-Contained Month-End Volatility



Joseph Moran

President, Home Fast Funding Inc.

www.gethomefast.com

P: (813) 940-7272

jmoran@homefastfunding.com

100 South Ashley Drive
Tampa FL 33612

156840

1639621



MBS & Treasury Markets

UMBS 5.5	98.81	-0.19	10YR	4.441%	+0.037%	6/2/2025 5:00PM EST
----------	-------	-------	------	--------	---------	---------------------

Just a Bit More Reprice Risk

The first alert arrived amid minimal repricing risk due to morning rate sheet timing. Specifically, most lenders priced for the morning before the 10am rally and thus weren't seeing huge losses despite MBS being down more than an eighth from highs.

At this point, most lenders are seeing at least an eighth of a point of weakness from their AM rate sheet print time with MBS down a quarter point on the day. The weaker momentum looks to have leveled off with 10yr yields up 6bps at 4.465.

ALERT: Negative Reprice Risk Increasing

MBS MORNING: Softer Start Despite Tame ISM Manufacturing Data

Today's Mortgage Rates

30YR Fixed	6.96%	+0.01%	15YR Fixed	6.23%	+0.02%	6/2/2025
------------	-------	--------	------------	-------	--------	----------

Another Small Victory For Mortgage Rates

It has turned out to be a surprisingly calm week for and, as of today, largely a victorious one, even if the victories have been modest. Today's installment involves a 0.02% drop in the average top tier 30yr fixed rate. This brings the index to the lowest level of the week and a fairly decent 0.12% below last Friday's levels.

Most of this week's movement took place on Tuesday morning after markets returned from the holiday weekend. Movement has been minimal since then.

While economic data is a perennial source of inspiration for rates, none of this week's data had a major impact. In today's case, the PCE inflation data was in line with expectations, so it wouldn't have made a case for a rate reaction under normal circumstances, let alone the present environment in which that data is taken with a grain of salt as markets wait to see if tariff-driven inflation materializes over the coming months.

Economic Calendar

Last Week | This Week | Next Week

Time	Event	Actual	Forecast	Prior
Monday, Jun 02				
9:45AM	May S&P Global Manuf. PMI ☆	52	52.3	50.2
10:00AM	May ISM Manufacturing Employment	46.8		46.5
10:00AM	Apr Construction spending (%)	-0.4%	0.3%	-0.5%
10:00AM	May ISM Mfg Prices Paid ★	69.4	70.2	69.8
10:00AM	May ISM Manufacturing PMI ★★	48.5	49.5	48.7
10:15AM	Fed Logan Speech ☆			
12:45PM	Fed Goolsbee Speech ☆			
12:45PM	Fed Goolsbee Speech ☆			
1:00PM	Fed Chair Powell Speech ★★			
Tuesday, Jun 03				
10:00AM	Apr Factory orders mm (%)	-3.7%	-3%	3.4%
10:00AM	Apr JOLTs Job Quits (ml) ☆	3.194M		3.332M
10:00AM	Apr USA JOLTS Job Openings (ml) ★	7.391M	7.10M	7.192M
10:10AM	Jun IBD economic optimism	49.2	49.1	47.9
12:45PM	Fed Goolsbee Speech ☆			
1:00PM	Fed Cook Speech ☆			
3:30PM	Fed Logan Speech ☆			
4:30PM	May Total Vehicle Sales (ml)	15.65M	16.3M	17.25M

Recent Housing News

- [Pending Home Sales Slip, But the Broader Story Remains the Same](#)
- [Purchase and Refi Demand Diverge Again](#)
- [Home Prices Falling or Growing Less Quickly?](#)

Read My Latest Newsletter

Calmer, Friendlier Week For Rates Amid Mixed Signals For Housing

In addition to being shorter than normal due to the Memorial Day holiday, there wasn't much meat on this week's event calendar - at least not as far as the rate market was concerned. Earnings releases caused some volatility in the stock market, but rates drifted sideways to slightly lower after a larger drop on Tuesday. Interestingly enough, Tuesday's drop was more to do with bond market improve...

Mortgage Calculators

-  [Mortgage Payment w Amortization](#)
-  [Loan Comparison](#)
-  [Advanced Loan Comparison](#)
-  [Early Payoff](#)
-  [Should I Refinance?](#)
-  [Rent vs. Buy](#)
-  [Blended Rate](#)