

# ECONOMIC CALENDAR

Stay Informed of Market-Moving Events

## US Economic Calendar - This Week

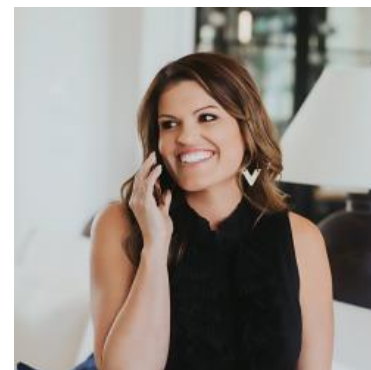
Follow the latest US economic indicators as they're released with this real-time calendar.

### Monday, Apr 06

Date	Event	Actual	Forecast	Prior
10:00AM	Mar ISM Biz Activity ☆	53.9		59.9
10:00AM	Mar ISM Services Prices ☆	70.7		63.0
10:00AM	Mar ISM Services New Orders ☆	60.6		58.6
10:00AM	Mar ISM N-Mfg PMI ★★	54.0	55	56.1
10:00AM	Mar ISM Services Employment ☆	45.2		51.8
11:30AM	52-Week Bill Auction (bl)	89		
11:30AM	3-Month Bill Auction	3.635%		3.620%
11:30AM	6-Month Bill Auction	3.615%		3.605%
11:30AM	26-Week Bill Auction (bl)	77		

### Tuesday, Apr 07

Date	Event	Actual	Forecast	Prior
5:30AM	Mar LMI Logistics Managers Index Current	65.7		61.5
8:15AM	ADP Employment Change Weekly	26K		10K
8:30AM	Feb Durables ex-transport (%)	0.8%	0.5%	0.4%
8:30AM	Feb Core CapEx (%) ☆	0.6%	0.4%	0%
8:30AM	Feb Durable goods (%) ☆	-1.4%	-0.5%	0%
8:30AM	Feb Durables ex-defense mm (%)	-1.2%		0.5%
8:55AM	Apr/04 Redbook yy (%)	7.6%		6.9%
9:20AM	NY Fed Bill Purchases 1 to 4 months (%)		\$8.071 billion	
10:10AM	Apr IBD economic optimism	42.8	48.1	47.5
10:30AM	Mar Used Car Prices MoM	1.4%		0.8%
10:30AM	Mar Used Car Prices YoY	6.2%		4%
11:00AM	Mar Consumer Inflation Expectations ☆	3.4%		3%
11:30AM	26-Week Bill Auction (bl)	70		
12:35PM	Fed Goolsbee Speech ☆			
1:00PM	3-Year Note Auction	3.897%		3.579%
1:00PM	3-Yr Note Auction (bl)	58		
3:00PM	Feb Consumer credit (bl)	\$9.48B	\$10B	\$8.05B
4:30PM	Apr/03 API weekly crude stocks (ml)	3.719M		10.263M
5:50PM	Fed Jefferson Speech ☆			



### Ashlynn Kelso

Senior Loan Officer, RWM Home Loans

[www.ashlynnkelsoteam.com](http://www.ashlynnkelsoteam.com)

M: (737) 444-1002

[ashlynnkelso@gmail.com](mailto:ashlynnkelso@gmail.com)

700 S Austin Ave Suite 202  
Georgetown Texas 78626  
1074888



## Wednesday, Apr 08

Date	Event	Actual	Forecast	Prior
7:00AM	Apr/03 MBA Refi Index	919.9		946.4
7:00AM	Apr/03 MBA 30-yr mortgage rate (%)	6.51%		6.57%
7:00AM	Apr/03 MBA Mortgage Applications	-0.8%		-10.4%
7:00AM	Apr/03 Mortgage Market Index	276.0		278.3
7:00AM	Apr/03 MBA Purchase Index	161.1		159.4
10:30AM	Apr/03 EIA Distillate Fuel Production Change	0.009M		0M
10:30AM	Apr/03 EIA Gasoline Stocks Change	-1.589M	-1.4M	-0.585M
10:30AM	Apr/03 EIA Crude Oil Imports Change	-0.758M		-0.209M
10:30AM	Apr/03 EIA Heating Oil Stocks Change	0.233M		-0.809M
10:30AM	Apr/03 EIA Gasoline Production Change	-0.214M		-0.152M
10:30AM	Apr/03 Crude Oil Inventory (ml)	3.081M	0.7M	5.451M
10:30AM	Apr/03 EIA Cushing Crude Oil Stocks Change	0.024M		0.52M
10:30AM	Apr/03 EIA Refinery Crude Runs Change	-0.129M		-0.219M
10:30AM	Apr/03 EIA Distillate Stocks Change	-3.144M	-1.5M	-2.111M
11:30AM	17-Week Bill Auction	3.600%		3.615%
1:00PM	10-yr Note Auction (bl) ★	39		
1:00PM	10-Year Note Auction	4.282%		4.217%
1:05PM	Fed Daly Speech ☆			
2:00PM	FOMC Minutes ★★			

# Thursday, Apr 09

Date	Event	Actual	Forecast	Prior
8:30AM	Apr/04 Jobless Claims (k) ☆	219K	210K	202K
8:30AM	Apr/04 Jobless claims 4-wk avg (k)	209.5K		207.75K
8:30AM	Mar/28 Continued Claims (k) ☆	1794K	1840K	1841K
8:30AM	Feb PCE prices (m/m) (%) ☆	0.4%	0.4%	0.3%
8:30AM	Q4 Real Consumer Spending QoQ Final	1.9%	2%	3.5%
8:30AM	Feb Personal Income (%)	-0.1%	0.3%	0.4%
8:30AM	Q4 PCE Prices (Q/Q) ☆	2.9%	2.9%	2.8%
8:30AM	Q4 GDP deflator (%)	3.7%	3.8%	3.7%
8:30AM	Feb Core PCE (y/y) (%) ★	3%	3%	3.1%
8:30AM	Feb Core PCE (m/m) (%) ★	0.4%	0.4%	0.4%
8:30AM	Q4 Core PCE Prices QoQ ☆	2.7%	2.7%	2.9%
8:30AM	Feb PCE (y/y) (%) ☆	2.8%	2.8%	2.8%
8:30AM	Q4 GDP Final Sales (%)	0.3%	0.4%	4.5%
8:30AM	Q4 GDP (%) ★	0.5%	0.7%	4.4%
8:30AM	Feb Inflation-Adjusted Spending (Consumption) (%)	0.5%	0.5%	0.3%
8:30AM	Q4 Corporate profits (%)	5.7%		4.7%
8:30AM	Feb Real Personal Spending MoM	0.1%		0.1%
10:00AM	Feb Wholesale inventories (%)	0.8%	-0.4%	-0.5%
10:30AM	Apr/03 Nat gas-EIA, change bcf	50Bcf	46Bcf	36Bcf
11:30AM	4-Week Bill Auction	3.560%		3.620%
11:30AM	8-Week Bill Auction	3.575%		3.620%
12:00PM	Apr/09 30-Year Mortgage Rate	6.37%		6.46%
12:00PM	Apr/09 15-Year Mortgage Rate	5.74%		5.77%
12:00PM	WASDE Report (%)			
1:00PM	30-Yr Bond Auction (bl) ☆	22		
1:00PM	30-Year Bond Auction ☆	4.876%		4.871%
4:30PM	Apr/08 Central Bank Balance Sheet	\$6.69T		\$6.68T

## Friday, Apr 10

Date	Event	Actual	Forecast	Prior
12:00AM	Roll Date - UMBS 30YR			
8:30AM	Mar Core CPI index, sa	330.293		327.460
8:30AM	Mar CPI index, nsa	330.21	330.41	326.79
8:30AM	Mar m/m Headline CPI (%) ★	0.9%	0.9%	0.3%
8:30AM	Mar m/m CORE CPI (%) ★★	0.2%	0.3%	0.2%
8:30AM	Mar y/y CORE CPI (%) ★★	2.6%	2.7%	2.5%
8:30AM	Mar y/y Headline CPI (%) ☆	3.3%	3.3%	2.4%
10:00AM	Feb Factory orders mm (%)	0%	-0.2%	0.1%
10:00AM	Feb Factory ex-transp mm (%)	1.2%		0.4%
10:00AM	Apr Consumer Sentiment (ip) ☆	47.6	52	53.3
10:00AM	Apr U Mich conditions ☆	50.1		55.8
10:00AM	Apr Michigan Consumer Expectations Final	46.1		51.7
10:00AM	Apr Sentiment: 5y Inflation (%) ☆	3.4%		3.2%
10:00AM	Apr Sentiment: 1y Inflation (%) ☆	4.8%		3.8%
1:00PM	Apr/10 Baker Hughes Oil Rig Count	411		411
1:00PM	Apr/10 Baker Hughes Total Rig Count	545		548
2:00PM	Mar Federal budget (bl)	\$-164.1B	\$-156.75B	\$-308B

### Event Importance:

No Stars = Insignificant | ☆ Low | ★ Moderate | ★★ Important | ★★★ Very Important