

# ECONOMIC CALENDAR

Stay Informed of Market-Moving Events

## US Economic Calendar - Next Week

Follow the latest US economic indicators as they're released with this real-time calendar.

### Sunday, May 31

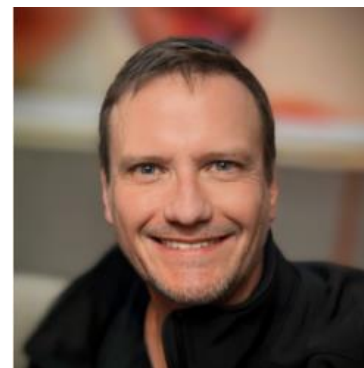
Date	Event	Forecast	Prior
8:30AM	Fed Waller Speech ☆		

### Monday, Jun 01

Date	Event	Forecast	Prior
9:45AM	May S&P Global Manuf. PMI ☆	55.3	54.5
10:00AM	May ISM Mfg Prices Paid ★	85.3	84.6
10:00AM	May ISM Manufacturing PMI ★★	52.6	52.7
10:00AM	May ISM Manufacturing Employment		46.4
10:00AM	May ISM Manufacturing New Orders		54.1
10:00AM	Apr Construction spending (%)	0.3%	0.6%
11:30AM	52-Week Bill Auction (bl)		
11:30AM	6-Month Bill Auction		3.650%
11:30AM	3-Month Bill Auction		3.595%
11:30AM	26-Week Bill Auction (bl)	77	

### Tuesday, Jun 02

Date	Event	Forecast	Prior
1:50AM	Fed Kashkari Speech ☆		
6:00AM	May LMI Logistics Managers Index Current		69.9
8:30AM	Fed Hammack Speech ☆		
8:55AM	May/30 Redbook yy (%)		9%
10:00AM	Apr JOLTS Job Quits (ml) ☆		3.171M
10:00AM	Apr USA JOLTS Job Openings (ml) ★	6.8M	6.866M
10:10AM	Jun IBD economic optimism		42.6
11:30AM	26-Week Bill Auction (bl)		
11:30AM	6-Week Bill Auction (%)		3.620%
4:30PM	May/29 API weekly crude stocks (ml)		-2.8M



### Rich E Blanchard

Managing Director, RICH Home Loans LLC

<https://www.richhomeloans.com>

P: (303) 328-7047

1550 Wewatta St  
Denver CO 80202

NLMS: 492461

**RICH**  
HOME LOANS LLC



## Wednesday, Jun 03

Date	Event	Forecast	Prior
7:00AM	May/29 MBA Mortgage Applications		-8.5%
7:00AM	May/29 MBA 30-yr mortgage rate (%)		6.65%
7:00AM	May/29 MBA Purchase Index		169.7
7:00AM	May/29 Mortgage Market Index		259.4
7:00AM	May/29 MBA Refi Index		753.7
8:15AM	May ADP jobs (k) ☆	110K	109K
9:00AM	Fed Barr Speech ☆		
9:45AM	May S&P Global Composite PMI ☆	51.7	51.7
9:45AM	May S&P Global Services PMI ☆	50.9	51.0
10:00AM	May ISM Services New Orders ☆		53.5
10:00AM	May ISM N-Mfg PMI ★★	53.6	53.6
10:00AM	May ISM Services Employment ☆		48.0
10:00AM	May ISM Biz Activity ☆		55.9
10:00AM	Apr Factory orders mm (%)	4.6%	1.5%
10:00AM	Apr Factory ex-transp mm (%)		1.6%
10:00AM	May ISM Services Prices ☆		70.7
10:30AM	May/29 EIA Distillate Stocks Change		-2.107M
10:30AM	May/29 EIA Refinery Crude Runs Change		0.652M
10:30AM	May/29 EIA Gasoline Production Change		0.6M
10:30AM	May/29 Crude Oil Inventory (ml)		-3.327M
10:30AM	May/29 EIA Cushing Crude Oil Stocks Change		-2.794M
10:30AM	May/29 EIA Distillate Fuel Production Change		0.076M
10:30AM	May/29 EIA Heating Oil Stocks Change		0.306M
10:30AM	May/29 EIA Gasoline Stocks Change		-2.572M
10:30AM	May/29 EIA Crude Oil Imports Change		0.36M
11:30AM	17-Week Bill Auction		3.630%
2:00PM	May Total Vehicle Sales (ml)	16M	15.9M
2:00PM	Fed Beige Book		
4:00PM	Fed Logan Speech ☆		

## Thursday, Jun 04

Date	Event	Forecast	Prior
5:30AM	May Challenger layoffs (k)		83.387K
8:30AM	Q1 Nonfarm Productivity QoQ Final	0.8%	1.6%
8:30AM	May/30 Jobless Claims (k) ☆	211K	215K
8:30AM	May/30 Jobless claims 4-wk avg (k)		209K
8:30AM	May/23 Continued Claims (k) ☆		1786K
8:30AM	Q1 Unit Labour Costs QoQ Final ☆	2.3%	4.6%
9:20AM	NY Fed Bill Purchases 1 to 4 months (%)	\$6.576 billion	
10:30AM	May/29 Nat gas-EIA, change bcf		92Bcf
11:30AM	4-Week Bill Auction		3.630%
11:30AM	8-Week Bill Auction		3.615%
12:00PM	Jun/04 15-Year Mortgage Rate		5.87%
12:00PM	Jun/04 30-Year Mortgage Rate		6.53%
1:10PM	Fed Daly Speech ☆		
4:30PM	Jun/03 Central Bank Balance Sheet		\$6.704T

## Friday, Jun 05

Date	Event	Forecast	Prior
8:30AM	May Manufacturing payrolls (k)		-2K
8:30AM	May U-6 Unemployment Rate		8.2%
8:30AM	May Private Payrolls (k)	85K	123K
8:30AM	May Participation Rate ☆		61.8%
8:30AM	May Unemployment rate mm (%) ★★	4.3%	4.3%
8:30AM	May Government Payrolls		-8K
8:30AM	May Non Farm Payrolls (k) ★★	96K	115K
8:30AM	May Average Hourly Earnings YoY	3.5%	3.6%
8:30AM	May Average earnings mm (%) ★	0.3%	0.2%
8:30AM	May Average workweek hrs (hr)	34.3	34.3
9:00AM	May Used Car Prices YoY		1.8%
9:00AM	May Used Car Prices MoM		-1.6%
1:00PM	Jun/05 Baker Hughes Oil Rig Count		429
1:00PM	Jun/05 Baker Hughes Total Rig Count		562
3:00PM	Apr Consumer credit (bl)	\$17.5B	\$24.86B

## Saturday, Jun 06

Date	Event	Forecast	Prior
12:00PM	Fed Barr Speech ☆		

### Event Importance:

No Stars = Insignificant | ☆ Low | ★ Moderate | ★★ Important | ★★★ Very Important