

ECONOMIC CALENDAR

Stay Informed of Market-Moving Events

US Economic Calendar - Next Week

Follow the latest US economic indicators as they're released with this real-time calendar.

Sunday, Jan 18

Date	Event	Forecast	Prior
7:00PM	USHoliday		

Monday, Jan 19

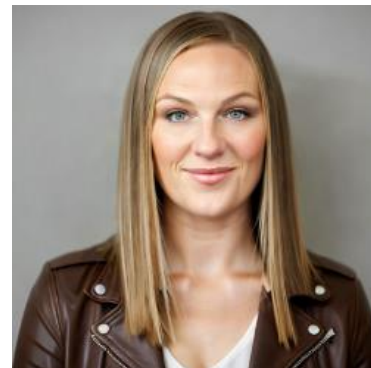
Date	Event	Forecast	Prior
12:00AM	Martin Luther King Jr. Day ★★		

Tuesday, Jan 20

Date	Event	Forecast	Prior
8:15AM	ADP Employment Change Weekly ★★		11.75K
8:55AM	Jan/17 Redbook yy (%)		5.7%
11:30AM	3-Month Bill Auction		
11:30AM	6-Month Bill Auction		
11:30AM	52-Week Bill Auction		
4:30PM	Jan/16 API weekly crude stocks (ml)		5.27M

Wednesday, Jan 21

Date	Event	Forecast	Prior
12:00AM	Roll Date - Ginnie Mae 30YR		
8:00AM	Sep Building Permits (ml)		1.33M
8:00AM	Sep Build permits: change mm (%)		-2.3%
8:00AM	Nov Building Permits (ml)		
8:00AM	Nov Build permits: change mm (%)		
8:30AM	Nov Building Permits (ml)		
8:30AM	Nov Build permits: change mm (%)		
8:30AM	Nov Housing starts number mm (ml)		
8:30AM	Nov House starts mm: change (%)		
10:00AM	Sep Construction spending (%)	-0.1%	0.2%
10:00AM	Oct Construction spending (%)		



Stacy Martinez

Mortgage Broker/Owner,
Mortgage Marketplace,
LLC

mortgagemarketplace.biz/.../stacy-martinez

P: (503) 560-3060

M: (503) 560-3060

3723 Fairview Industrial Dr SE
Salem OR 97302
2227274



EQUAL HOUSING
OPPORTUNITY

Date	Event	Forecast	Prior
8:30AM	Q3 Core PCE Prices QoQ	2.9%	2.6%
8:30AM	Q3 GDP Final Sales (%)		7.5%
8:30AM	Q3 GDP deflator (%)		2.1%
8:30AM	Q3 Real Consumer Spending QoQ Final		2.5%
8:30AM	Q3 PCE Prices QoQ Final	2.8%	2.1%
8:30AM	Q3 GDP (%)		3.8%
8:30AM	Q3 Corporate profits (%)		0.2%
10:00AM	Oct Core PCE Inflation (y/y) (%)		2.8%
10:00AM	Oct Core PCE (m/m) (%)		0.2%
10:00AM	Oct PCE (y/y) (%)		2.8%
10:00AM	Oct PCE price index mm (%)		0.3%
10:00AM	Oct Personal Income (%)		0.4%
10:00AM	Oct Inflation-Adjusted Spending (Consumption) (%)		0.3%
10:00AM	Nov Personal Income (%)		
10:00AM	Nov Core PCE Inflation (y/y) (%)		
10:00AM	Nov Inflation-Adjusted Spending (Consumption) (%)		
10:00AM	Nov PCE (y/y) (%)		
10:00AM	Nov Core PCE (m/m) (%)		
10:00AM	Nov PCE price index mm (%)		

Event Importance:

No Stars = Insignificant | ☆ Low | ★ Moderate | ★★ Important | ★★★ Very Important